

Recommended Lipsticks

Ivory 100, 104, 105, Ivory 1 and Ivory .5 Skin Tones



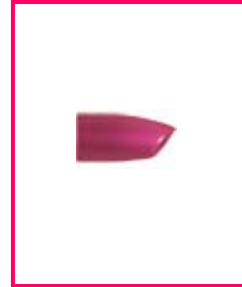
Pink Satin



Sunny Citrus*



Sunset



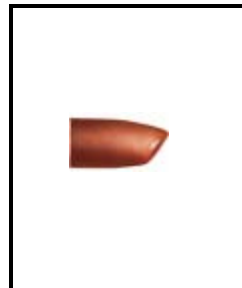
Hibiscus



Red



Shell*



Toffee



Pink Passion



Apricot Glaze



Dusty Rose



Icy Peach*



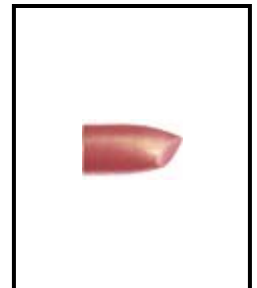
Frosted Rose



Whipped Berries



Berry Kiss



Sweet Nectar



Black Cherry



Apple Berry



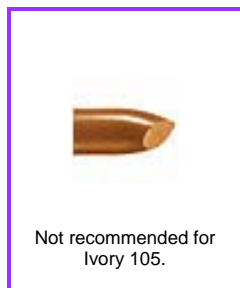
Boysenberry



Sheer Blush



Pink Shimmer



Sunlit Sand

Lipstick Intensity

- Bright
- Deep
- Neutral
- Layering

* Shades without shimmer or pearl



Recommended Lipsticks

Ivory 200, 202, 204, 205, Ivory 1 and Ivory 2 Skin Tones



Pink Satin



Sunny Citrus*



Sunset



Hibiscus



Red



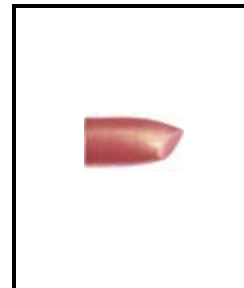
Apricot Glaze



Icy Peach*



Pink Passion



Sweet Nectar



Dusty Rose



Raisinberry



Frosted Rose



Whipped Berries



Shell*



Whisper*



Toffee



Apple Berry



Berry Kiss



Boysenberry



Not recommended for Ivory 204

Blaze*



Black Cherry



Pink Shimmer



Sunlit Sand

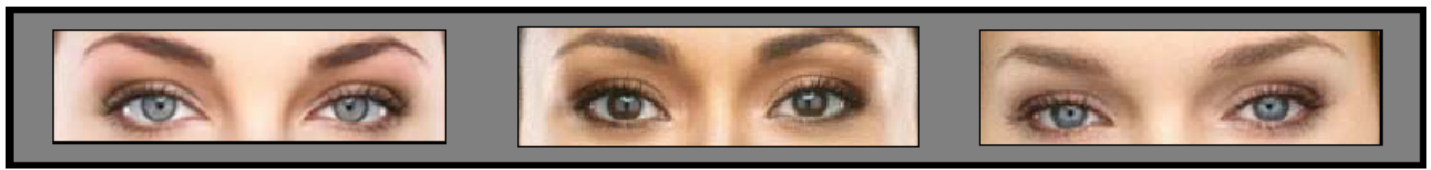


Sheer Blush

Lipstick Intensity

- Bright
- Deep
- Neutral
- Layering

* Shades without shimmer or pearl



Recommended Lipsticks

Beige 300, 302, 304, 305, Ivory 2, Beige 1 and Beige .5 Skin Tones



Pink Satin



Sunny Citrus*



Sunset



Hibiscus



Red



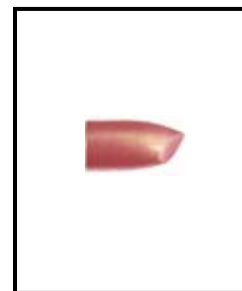
Shell*



Icy Peach*



Pink Passion



Sweet Nectar



Dusty Rose



Apricot Glaze



Frosted Rose



Whipped Berries



Not recommended for Beige 305.

Whisper*



Berry Kiss



Toffee



Raisinberry



Apple Berry



Boysenberry



Recommended only for Beige 302 and Beige 1.

Midnight Red*



Black Cherry



Not recommended for Beige 304, 305.

Blaze*



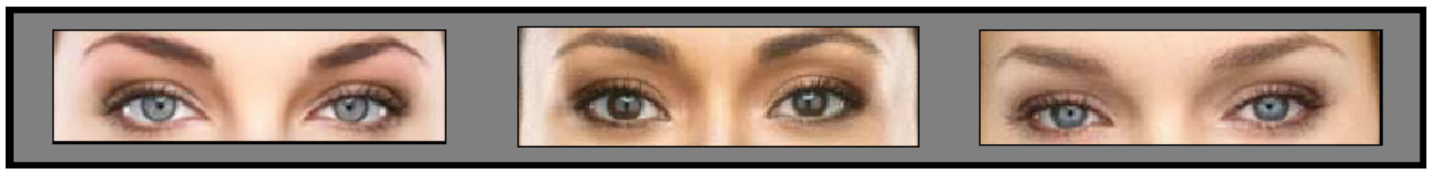
Sunlit Sand



Sheer Blush



Pink Shimmer



Recommended Lipsticks

Beige 400, 402, 404, Beige 1, Beige 2, Beige .5 and Beige 1.5 Skin Tones



Pink Satin



Sunny Citrus*



Sunset



Hibiscus



Red



Apricot Glaze



Raisinberry



Pink Passion



Whisper*



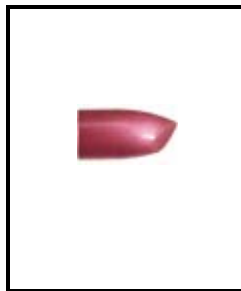
Dusty Rose



Shell*



Frosted Rose



Whipped Berries



Icy Peach*



Sweet Nectar



Toffee



Blaze*



Black Cherry



Berry Kiss



Apple Berry



Boysenberry



Pink Shimmer



Sunlit Sand

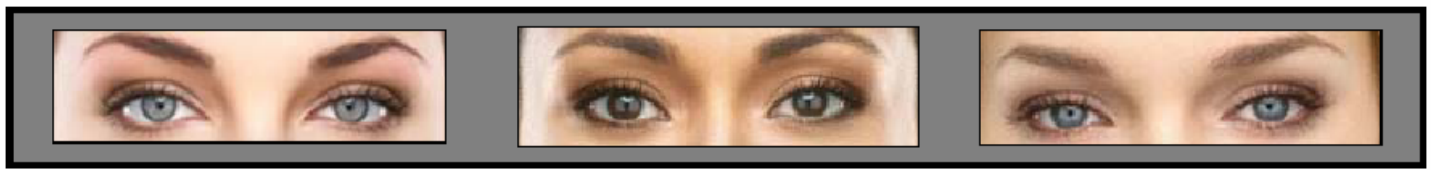


Sheer Blush



Mocha Freeze

Copper Star, a neutral color, and Amber Glow, a layering shade, are only recommended for Beige 400 and 402.
Gingerbread, Amber Suede, Maple, and Midnight Red, all deep colors, are recommended only for 402.



Recommended Lipsticks

Bronze 500, 504, 507, Bronze 1, Beige 2, Bronze 2 and Bronze 4 Skin Tones



Sunny Citrus*



Sunset



Hibiscus



Red



Not recommended for
Bronze 507.

Icy Peach



Not recommended for
Bronze 507.

Whisper*



Not recommended for
Bronze 507.

Toffee



Not recommended for
Bronze 507.

Pink Passion



Raisinberry



Copper Star



Gingerbread



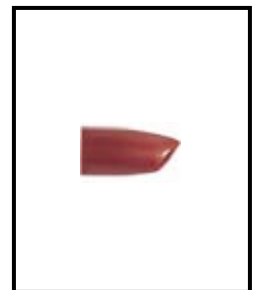
Maple*



Whipped Berries



Berry Kiss*



Downtown Brown



Bronzed



Nutmeg



Apple Berry



Amber Suede



Blaze*



Midnight Red*



Boysenberry



Black Cherry



Hot Mocha*



Sweet Nectar



Recommended Lipsticks

Bronze 600, 607, 708, 808, Bronze 3, Bronze 4 and Bronze 5 Skin Tones



Sunny Citrus*



Hibiscus



Red



Whipped Berries



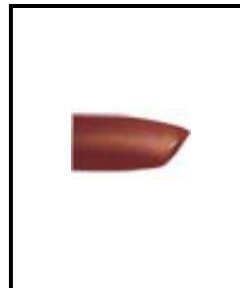
Gingerbread



Downtown Brown



Hot Mocha*



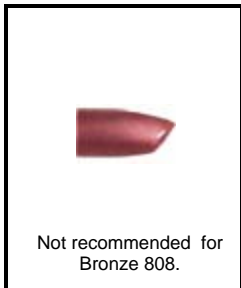
Bronzed



Nutmeg



Copper Star



Raisinberry



Maple*



Rich Fig



Berry Kiss



Apple Berry



Black Cherry



Boysenberry



Blaze*



Amber Suede



Midnight Red*

Lipstick Intensity

- Bright
- Deep
- Neutral
- Layering



Mocha Freeze

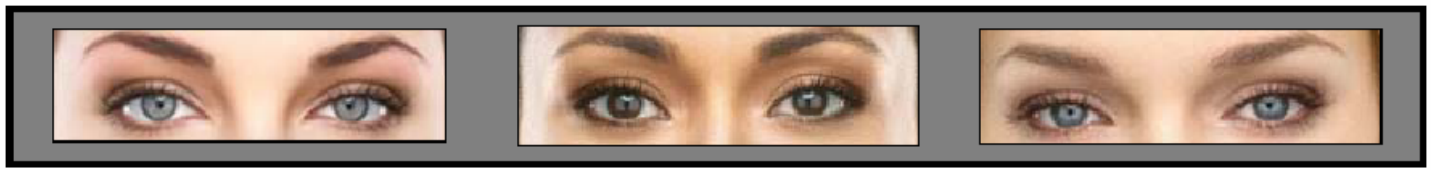


Amber Glow



Sunlit Sand

* Shades without shimmer or pearl



Mary Kay NouriShine Lip Gloss



Beach Bronze



Berry Sparkle



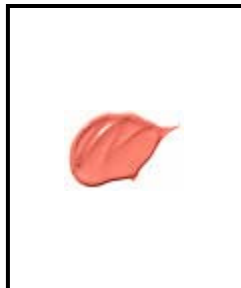
Coral Rose



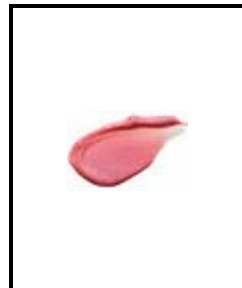
Cream & Sugar



Gold Rush



Melon Sorbet



Pink Diamonds



Starry



Sugarberry



Sweet Raisin



Fancy Nancy



Bronze Bliss

Lip Liners



For Bronze and Ebony
Skin Tones only

Cappuccino



Chocolate



Cinnamon



Coral



Dark Berry



For Bronze and Ebony
Skin Tones only

Dark Chocolate



Dusty Pink



Neutral



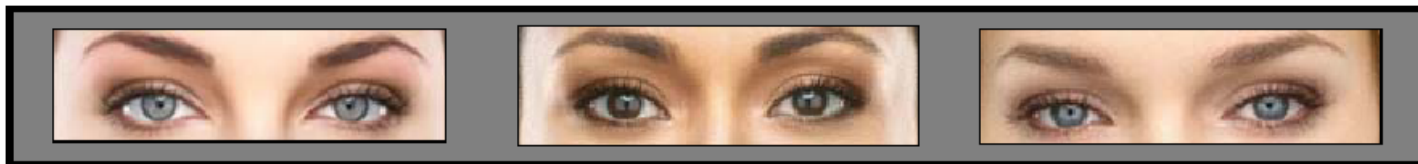
Pink



Plum



Raspberry



Mary Kay Tinted Lip Balm SPF 15



Rose*



Poppy*



Natural*



Apricot*



Blush*

* Shades without shimmer or pearl

Mary Kay Liquid Lip Color



Cherry Coffee



Chocoholic



Malted



Raspberry Ice



Sherbet



Royal Plum